

SIEMENS
Ingenuity for life



Engineered with TIA Portal

Machine-level
visualization
with SIMATIC HMI
Efficient to a new level

siemens.com/hmi

New standards for productivity – for a sustainable competitive advantage

Efficient engineering – the basis for innovation

The Swiss company Solinaut provides engineering services and software development for automation solutions. In cooperation with Siemens and by using the TIA Portal (Totally Integrated Automation) the system integrator provided the company valuable benefits.

Programmers save a great deal of time in the development. For example, several parameters can be created in a single step when engineering in the TIA Portal and blocks can be saved in libraries. In this way, Solinaut can concentrate on the important aspects of clear and intuitive visualization in an automation solution.

The results are tailor-made solutions to meet the needs of end users. For one such company, the Altendorf cheese dairy, it has more than paid for itself.

“Overall, we saved a lot of time in development and became even more flexible in terms of engineering.”

(Florian Ruegg, Solinaut GmbH)



Feast for the eyes – just like the cheese

Companies such as the Altendorf cheese dairy depend on automation due to the increasing global competition. One factor in this regard is to consistently make full use of the potential for optimization over the complete life cycle of a machine or plant. Specifically, this means less consumption of resources in production and to provide an operation intuitive enough that staff can concentrate on the quality of products.

This is why system integrator Solinaut developed a customized visualization concept for the Altendorf cheese dairy with decisive advantages:

- Enormously simplified process control for employees, including special panel screens with flowcharts
- Quick access to functions through slide-in and pop-up windows
- More control and easy maintenance with remote access

This investment in automation has already paid off. The time spent in daily production has practically been cut in half. The dairy now uses significantly less energy and water. Owner Erich Keller can look positively into the future.

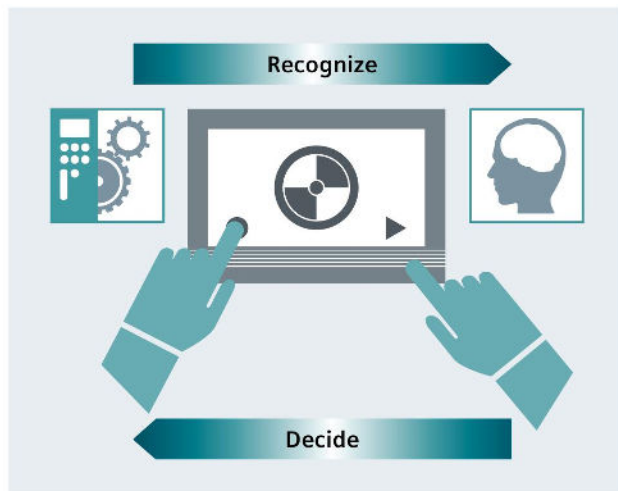
Find out more:
siemens.com/hmi-video-solinaut

Find out more:
siemens.com/hmi-video-altendorf

SIMATIC HMI – the sm@rt interface

HMI solutions are the only interface between man and machine. Optimal interaction between the two makes a valuable contribution in the following ways:

- Productivity – means competitiveness
- Efficiency – means cost savings
- Usability – means time savings



Added value = More value!



Efficient engineering

Create your visualization faster and more easily than ever before!



Innovative design and operation

Make visualizing the calling card for your machine!



Brilliant HMI devices

Use the right HMI device for your application!



Safe and secure

Protect your investment, your know-how and ensure reliable operation!



Commissioning in the fast lane

Waste no time with testing and servicing!



Openness with PC-based

You and your applications remain flexible and independent!



Find out more:
siemens.com/hmi-added-values

SIMATIC HMI

Efficiency in machine-level operator control and monitoring

Equipment for monitoring and operator control is needed wherever people have to work with machinery and plants performing tasks A to Z. It is not difficult to find the right device for the specific task. The challenge is to find a solution that is future-proof and flexible, that can be integrated into higher-level networks, and that can also meet the ever-increasing demands for transparency and data provision.

SIMATIC HMI Panels have proven their value in many different applications in all industrial sectors over many years. The range of the systems in use is just as wide as that of the applications and technologies in the respective plants.

SIMATIC HMI Software in the TIA Portal – more than just a visualization software
From machine-level visualization all the way to the high-performance SCADA system, SIMATIC WinCC in the TIA Portal and its efficient tools covers the entire engineering and visualization software spectrum – integrated across all performance classes!

Basic HMI:

SIMATIC WinCC Basic – the engineering software for simple solutions, optimized for control of the Basic Panels.

Advanced HMI Panel-based:

SIMATIC WinCC Comfort – the software for complex solutions with all HMI Panels.

Advanced HMI PC-based:

SIMATIC WinCC Advanced – engineering and runtime software for simple single-user systems, especially on the machine level.

SCADA:

SIMATIC WinCC Professional – engineering and runtime software for comprehensive multi-user systems and SCADA solutions in small and medium-sized plants.

Find out more:
siemens.com/wincc

Basic HMI



Panel-based

HMI devices with excellent price-performance ratio for simple visualization tasks

Advanced HMI



Panel-based

High-performance devices with convenience for visualization

Low

Application complexity &

For entry-level

Basic HMI is recommended for simple applications with a limited quantity scale and where the price-performance ratio is important in addition to a fast and intuitive operation. The devices offer a brilliant display quality and high-power visualization. This significantly facilitates the operation even of simple machines and equipment. Through turnkey and flexible solutions, you also save valuable time during installation and engineering.

Find out more:
siemens.com/basic-hmi

*“The operation is now more modern,
looks better and operation has become
more reliable at the same time.”*

Erich Keller, owner of the Altendorf cheese dairy



ance HMI
high con-
demanding
tasks



PC-based

High-performance HMI
devices for data-intensive and
complex visualization tasks

system performance

High

For higher demands

If you are looking for a panel-based solution for more demanding applications with larger quantity scales, make a decision for Advanced HMI.

The user benefits from excellent functionality and a wide range of devices and applications, with key or touch operation. Both stationary and mobile solutions are available.

Find out more:
[siemens.com/advanced-hmi-panel](https://www.siemens.com/advanced-hmi-panel)

For very high-end solutions

If production places particularly high demands on the quantity and type of information that must be processed and documented, a PC-based system is recommended. It offers the appropriate options for sufficient storage space, processing power, and data connectivity.

The user can either opt for a centralized solution, in which the visualization and PC are a single unit, or for a decentralized solution with an industrial monitor as a thin client.

More on SCADA systems at:
[siemens.com/advanced-hmi-pc](https://www.siemens.com/advanced-hmi-pc)



SIMATIC Basic HMI

Economic realization of simple HMI tasks

SIMATIC HMI Key Panels

You can use the SIMATIC HMI KP8 / KP8F and KP32F key panels to quickly realize operator panels. Since they are prefabricated and ready for installation, you will save a lot of time and money setting them up.

A smart alternative to long-travel keys:

- Flexible installation and direct installation in the control cabinet (IP65)
- Buttons with LED backlighting (5 colors)
- Connection via PROFINET with integrated switch
- Digital I/Os for connecting key switches or lamps, for example
- Integrated safety functionality; fail-safe transmission of safety-related signals via PROFIsafe

Your advantages at a glance

- Up to 60% less overhead for wiring and installation
- Direct connection of an emergency stop button or other fail-safe signals possible
- Easy integration into the automation solution

Find out more:
siemens.com/key-panels

SIMATIC HMI Basic Panels

Basic Panels are made for the cost-effective implementation of simple visualization tasks on the machine level. Their basic features and functionality as well as the especially attractive price make them perfect entry-level devices.

Beauty is simplicity:

- High-resolution, dimmable widescreen displays from 4" to 12" with 64,000 colors (also configurable for portrait format)
- Combined operation via touch screen and freely configurable keys
- USB connection for project transfer, data archiving, keyboard, mouse, etc.
- PROFIBUS or PROFINET versions for process communication

Your advantages at a glance

- Highest usability through innovative graphical user interface
- Fast start-up and archivable data recording
- Perfect interaction with the S7-1200 basic controller

Find out more:
siemens.com/basic-panels-2nd

Did you know?

To start smart and save money, we offer starter kits in conjunction with one of our basic controllers – SIMATIC S7-1200 or LOGO!



Find out more:
[siemens.com/basic-panels-starter-kits](https://www.siemens.com/basic-panels-starter-kits)

Devices for special requirements



SIPLUS

For simple automation tasks under extreme environmental conditions, special hardened SIPLUS versions are available offering increased operational reliability.

The standard for extreme conditions:

- Corrosive gas resistance to chemical, biological and mechanically active substances and salt mist
- 100% dewing and ice formation allowed
- Extended temperature range (–40 to +70 °C)
- Installation altitudes of –1,000 to +5,000 meters

Your advantages at a glance

- Continuous operation even in rough conditions
- Reduced production downtime and performance degradation
- High degree of investment security

Find out more:
[siemens.com/siplus-extreme](https://www.siemens.com/siplus-extreme)

“In our company where, in effect, a single person does all the engineering, we notice the excellent support provided by the TIA Portal.”

(Markus Achermann,
Managing Director of AC Schwimmbadtechnik)

The company, based in Hochdorf near Lucerne Switzerland, designs and builds exclusive swimming pools and jacuzzis. Their customers are private clients, architects, as well as operators of hotels or campsites.

AC Schwimmbadtechnik is using a new operating concept to simplify the control and water treatment of private swimming pools with the aid of S7-1200 controllers and Basic Panels.

The Basic package replaces the previous solution that had several LEDs and push buttons, so now there is only one panel for all messages and information. This allows even non-specialists or private users to operate their water treatment very easily and to instantly know what to do.

Such an integrated solution offered many advantages for AC Schwimmbadtechnik as well. A relatively small company often lacks the resources to have in-house know-how for a variety of systems. Standard software significantly reduces the work involved.



Find out more:
[siemens.com/hmi-reference-ac](https://www.siemens.com/hmi-reference-ac)



SIMATIC Advanced HMI

Realization of demanding, complex HMI tasks with a high level of convenience

SIMATIC HMI Comfort Panels

SIMATIC HMI Comfort Panels are designed for implementation of high-performance visualization applications on the machine-level. High performance, functionality and numerous integrated interfaces offer the greatest convenience in high-end applications.

Convenience without compromise:

- Brilliant, stepless dimmable widescreen displays from 4" to 22" with 16 million colors (configurable for portrait format)
- Touch or key operation and viewing angles of up to 170°
- Integrated system card for automatic backups
- Power management on the machine, even with PROFIenergy
- Perfect interaction with the advanced controller SIMATIC S7-1500

Your advantages at a glance

- Wide range of products, continuously scalable
- Flexibility thanks as standard functionality (including VB scripts and various viewers for system documentation and websites)
- Maximum data security, also in case of service

Find out more:
siemens.com/comfort-panels

SIMATIC HMI Mobile Panels

Take power and safety directly in your hands. When it comes to high-end mobile applications, opt for mobile panels. These are also for fail-safe machines and widely distributed plants.

Safe and secure:

- Brilliant, stepless dimmable widescreen displays with 4", 7" or 9" and 16 million colors
- Location identification via terminal box
- Comprehensive, integrated solutions with Safety Integrated
- Flexible evaluation of the safety switch elements, for example, via fail-safe S7 controllers
- Unique illuminated emergency stop button with PROFI-safe

Your advantages at a glance

- Highly ergonomic, combined with industrial design
- Space-saving and flexible in connection and installation
- Unique integration in safety applications

Find out more:
siemens.com/mobile-panels

Did you know?

To start smart and save money, we offer starter kits with Comfort Panel, SIMATIC WinCC Comfort and accessories!



Find out more:
siemens.com/comfort-panels-starter-kits

Devices for special requirements



Outdoor Panels

The outdoor panels are specifically designed for outdoor use and certified for numerous industries. They are extremely robust, readable in all lighting conditions, and safe to use.

"Convenience" for any use outdoors:

- Extreme application ranges from -30°C to $+60^{\circ}\text{C}$ at an elevation of 3,000 meters
- IP66-protected front panel with high UV resistance
- Glare-free daylight-readable display with automatic brightness control
- High vibration and shock resistance



Further versions available:



PRO



INOX



SIPLUS

Find out more:
siemens.com/comfort-outdoor

"The visualization fulfills all of our needs: colors, pop-up and slide-in windows. Everything works and looks great."

Jörg Koziol, Project Manager at Sesitec

The name Sesitec has become synonymous with the aquatic sports scene. The company has been developing water ski and wakeboard parks since 1992, both for amateur athletes as well as for professional tournaments. Over 320 installations have already been set up worldwide. Sesitec is considered the market leader within the segment.

The most important asset for these parks is the fun factor, not only for the visitors. The park operators also want to have fun operating the facilities. The control unit plays a pivotal role here. A large, clearly structured display is important, also that it is able to withstand harsh outdoor conditions, including heat, extreme lighting conditions, moisture, vibrations and, particularly during the summer, hand lotion!

In the end, an HMI Comfort Outdoor Panel was selected, which proved to be a perfect fit. No matter the sun's angle or intensity: The operator always has a good view of everything on the bright, contrasting display. With the appropriate engineering, additional processes such as the cross-examination of tickets can also be integrated into the visualization. As a result, the overall operation has become more customer-friendly and transparent. That also means: more attention for each individual customer.



Find out more:
siemens.com/hmi-video-turncable



SIMATIC Advanced HMI

Efficient realization of even the most demanding and complex HMI tasks

SIMATIC Industry Panel PCs

The most complex visualization and control tasks can be realized centrally on the machine with extremely compact industrial panel PCs. From embedded to the high-end industrial PCs, you can find optimum solution in our portfolio – to meet the many requirements of your automation system.

Greater emphasis on individuality:

- Brilliant widescreen displays from 7" to 22" with innovative single- or multi-touch technology
- High-performance processors and fast, robust mass storage (SSD, CFast)
- A variety of interfaces and configurations
- High quality and serviceability

SIMATIC IFP and SIMATIC ITC

Siemens has two innovative options for distributed control concepts. SIMATIC industrial monitors and thin clients are used as desktop devices for control centers, as built-in devices for operator panels or as PC-based visualization and control solutions in which the control unit is operated separately.

Much more than just an industrial monitor!

- Brilliant widescreen displays from 12" to 22" with single- (ITC) or multi-touch technology (IFP) and fast response times
- For installation or support arm / pedestal mounting (IP65)
- For the industrial 24-hour use
- Detached placement via DisplayPort / DVI, USB or Ethernet (ITC)

Your advantages at a glance

- Processing large amounts of data quickly
- Flexible configuration and expansion
- High data security and system availability in continuous operation

Find out more:
siemens.com/simatic-ipc

Your advantages at a glance

- High system availability ensured
- Universal application: 15m / 30m / unlimited
- Very user-friendly with gesture and multi-touch operation

Find out more:
siemens.com/simatic-ifp and siemens.com/simatic-itc



Devices for special requirements

IP65

SIMATIC PRO – for all-round protection
The HMI PROtected system allows you to specifically configure all-round, IP65-protected HMI devices for your individual applications and machines. Selecting the appropriate HMI device in the necessary

performance class and size, configuring needed expansions and installing the customized product directly on the machine is extremely easy.

Advantages at a glance

- Continuously scalable for performance class and size
- Individually configurable expansions and installation
- Attractive operator control solutions, winner of the IF Design Award 2017

Find out more:

siemens.com/simatic-hmi-pro

INOX

INOX – for hygienic production

These tested stainless steel devices offer safety and cleanliness for hygienic applications in the field of pharmaceuticals, fine chemicals and the food and beverages industry. Their smooth, splinter-proof

surface with degree of protection IP66K is easy to clean and liquids run off quickly.



EX – for genuinely hard cases

The HMI devices for hazardous areas can be used in zones 1/21 and 2/22 without implementing special measures, such as costly enclosures or additional certifications. This also applies to the chemical,

oil/gas or shipbuilding industries.

Find out more:

siemens.com/inox-hmi-devices
siemens.com/simatic-hmi-ex

“The user-friendliness of our machines is an important factor for our customers. It’s an area where we can now score even more points.”

Stefan Müller, Hans Weber Maschinenfabrik GmbH

The Hans Weber Maschinenfabrik GmbH located in Kronach, Germany has been in business for over 100 years. The company has always been a manufacturer of automatic grinding machines, both for metals as well as for wood. Its industrial wood-processing machines can be found in the most complex areas of application.

To maintain a decisive advantage over other competitors, the company particularly focuses its efforts on the quality and efficiency of its products. This is achieved through the use of innovative technologies such as contact-free workpiece detection and the proprietary CBF sanding technology.

The company not only stresses that the sanding results be perfect, but also the workmanship of the machines themselves. The more superior the quality of the product, the more important the design of the machines becomes. These days, that includes intuitive touch screen control. For its WEBER i-Touch control concept, a SIMATIC HMI PRO Comfort Panel was therefore chosen.

The sophisticated design underscores the quality workmanship of the machine components. Combined with a matching extension unit, it greatly simplifies the work at the machine. More than ever before, the machine has become a showcase for the client.



Find out more:

siemens.com/hmi-video-weber

Did you know?

Wherever your specific needs are not fully met by our standard equipment, Customized Automation provides the perfect solution. For example, we offer custom front panels that are available in a few days, even in small quantities.



Find out more:
siemens.com/customized-automation

Smart remote control and monitoring

With the SIMATIC WinCC Sm@rtClient app (for Android and iOS), you get mobile remote operating and monitoring on your smartphone or tablet. You are thus informed at all times and can react accordingly even when you are not on-site. This innovative, web-based solution is also possible overarching SCADA applications with WinCC Professional.

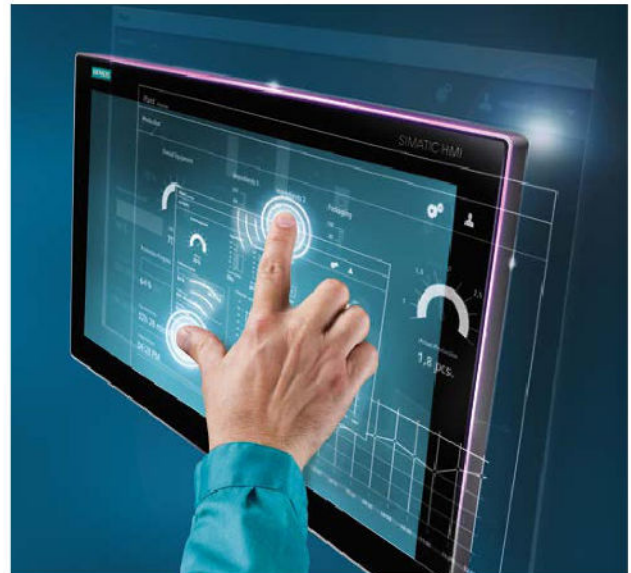
Global service of machines and plants



Find out more:
siemens.com/wincc-smart-client

Innovation in design and operation – glass front with multi-touch

The Industrial Flat Panels and some Panel PCs from Siemens support fast operation by means of intuitive gestures. This makes your visualization solutions become even more innovative and efficient.



More touch with multi-touch:

- Projected capacitive touch technology with simultaneous detection of 5 fingers
- Automatic detection of inadvertent contacts, e.g. with palm, drops, dirt etc.
- Anti-reflective glass front, scratch-resistant and chemical resistant
- Contrasting and sharp image display
- Approvals for various industries (e.g. shipbuilding or hazardous areas)

Find out more:
siemens.com/hmi-multitouch

The system solution for optimizing production

PC-based SIMATIC HMI/SCADA systems and SIMATIC industrial PCs form a high-performance and reliable platform for the acquisition, evaluation and visualization of data. The coordinated and certified package of hardware and software offers the highest quality in all areas.

Find out more:
siemens.com/scada-ipc

The top 3 tools for your optimum HMI solution

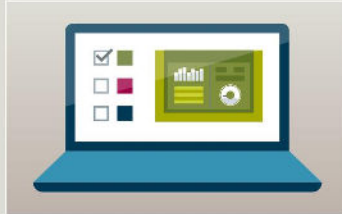
HMI Toolbox



It is usually the small things that make everyday life easier. For example, we offer: A stopwatch, calculator, calendar and many more such devices.



HMI Templates & Designs



Simply drag and drop to create unique user interface – with perfect usability and modifiable designs!



HMI Option+



Simple and secure configuration of IT-related functions during operation.



Find out more:
siemens.com/hmi

Machine-based visualization with SIMATIC HMI

- Efficient in engineering
- Innovative in design and operation
- Brilliant HMI operator devices
- Protection – with certainty
- Rapid commissioning
- Openness with PC-based

SIMATIC
HMI –
All info!



Follow us on:
www.twitter.com/siemensindustry
www.youtube.com/siemens

Published by
Siemens AG 2018

Digital Factory
90475 Nuremberg
Germany

Article No.: DFFA-B10135-03-7600
Printed in Germany
Dispo 06333
WS 11183.0

Subject to changes and errors.
The information given in this document only contains general descriptions and/or performance features which may not always specifically reflect those described, or which may undergo modification in the course of further development of the products. The requested performance features are binding only when they are expressly agreed upon in the concluded contract.